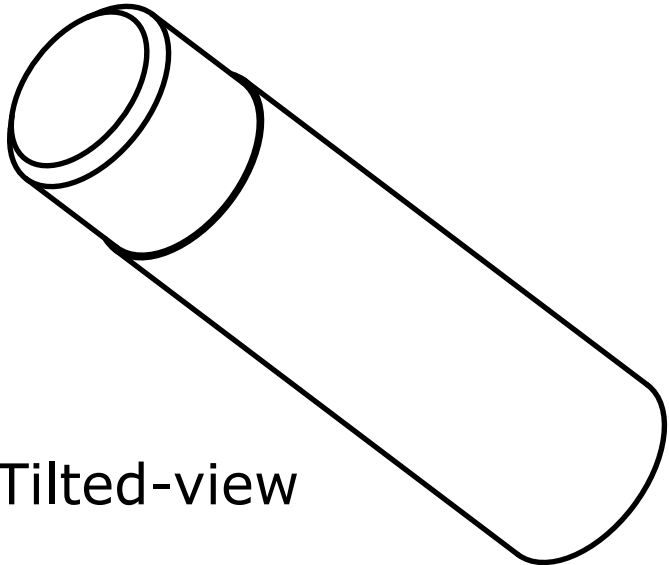
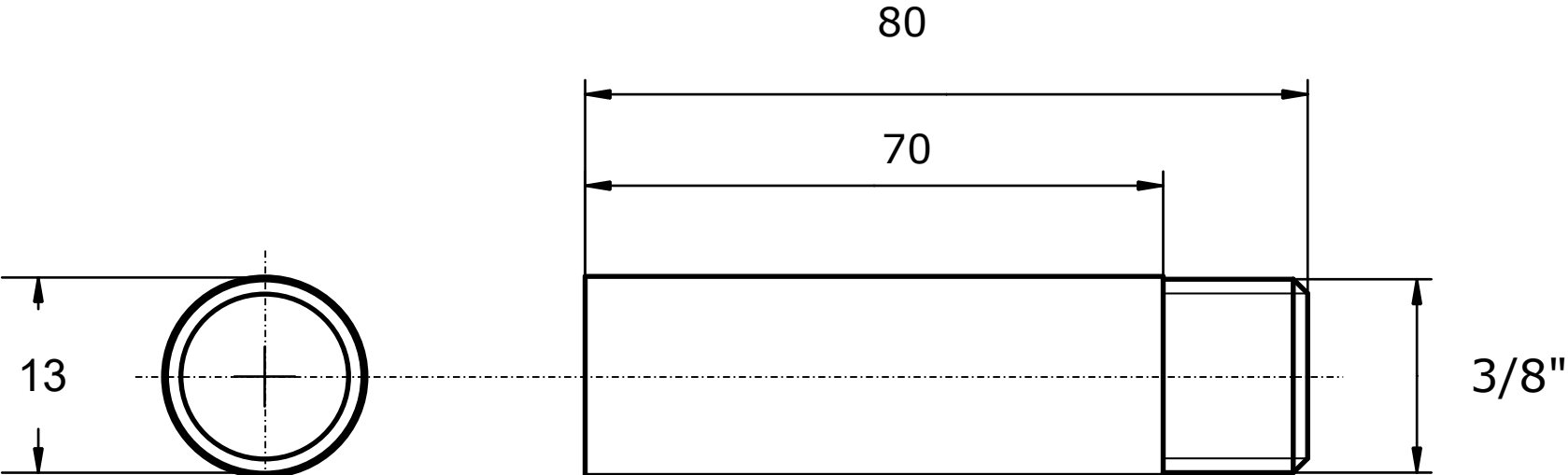



Anodes compatible with Caterpillar



Tilted-view

Reference number

6L2283

 ISO (Norm)	Anode Category :	Article:			
	Bolt-Anodes	9148			
	Material:	Weight:			
	Zinc	0,080kg			
	(For information only, is not subject to change management)		Scale:	/	
			Zst:	Changes:	Date: